

D

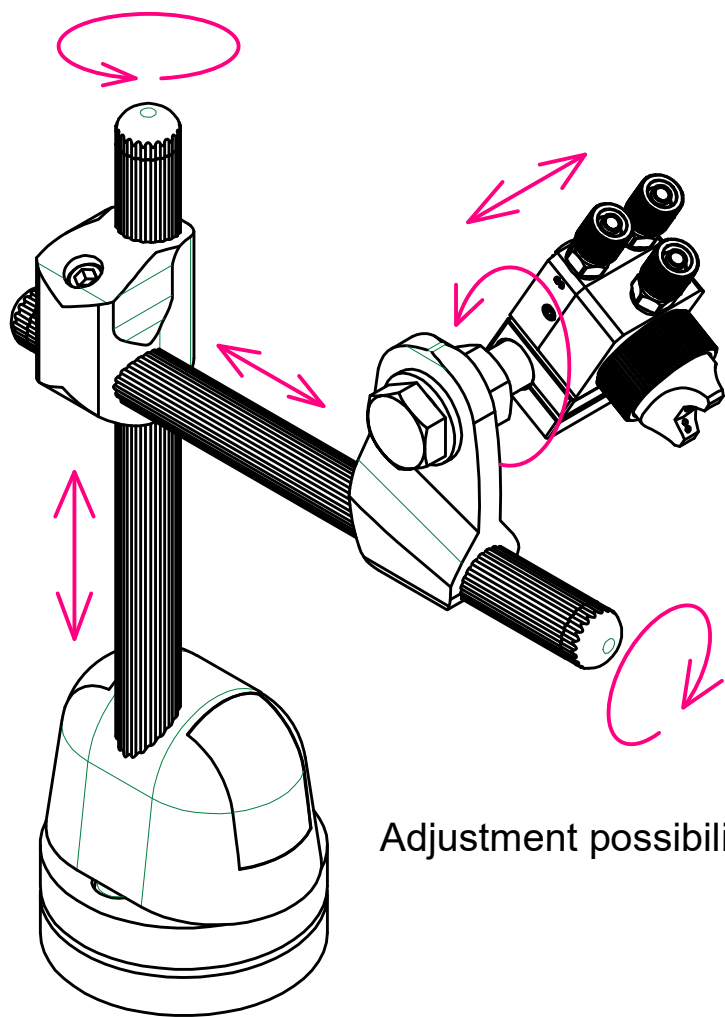
C

B

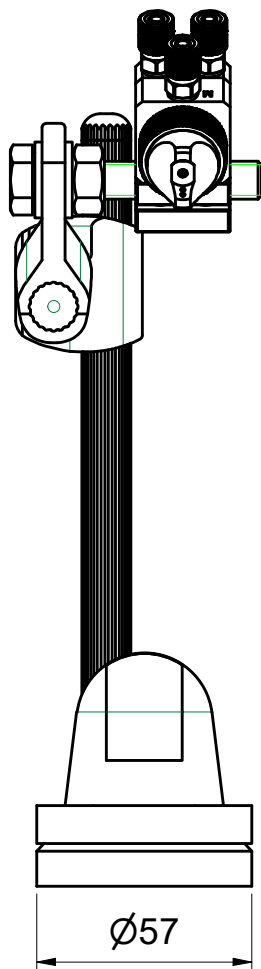
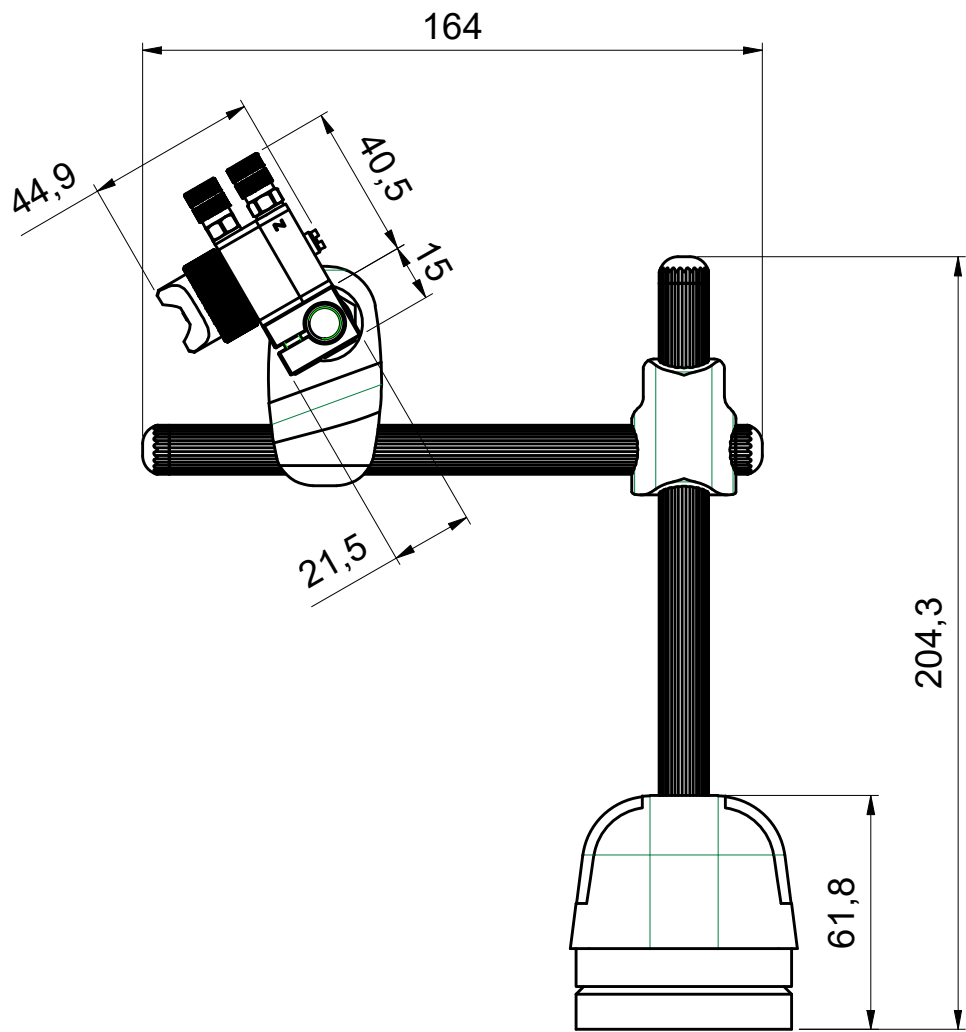
D

C

B






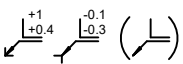
Adjustment possibilities



A

A

ISO 2768-2 K															
Range	0-10	>10-30	>30-100	>100-300	>300-1000	>1000-3000	0-100	>100-300	>300-1000	>1000-3000					
Tolerance	0.05	0.1	0.2	0.4	0.6	0.8	0.4	0.6	0.8	1	0.2				
Default tolerance except material stock dimensions															
ISO 2768-1 m Linear							Radii and Chamfers			Angular Dimensions					
Range	>0.5-6	>6-30	>30-120	>120-400	>400-1000	>1000-2000	>2000	>0.5-3	>3-6	>6	0-10	>10-50	>50-120	>120-400	>400
Toler.	±0.1	±0.2	±0.3	±0.5	±0.8	±1.2	±2	±0.2	±0.5	±1	±1°	±0.5°	±0.32°	±0.16°	±0.08°

-	PRIMA EMISSIONE				FedericoZoppetti		13/06/2023				
REV	Description				Designed		Date		Released		Date
 		Raw material:			 FIRST ANGLE PROJ.		 ISO 13715		Weight		
		Surface treatment:							0,66		
		Heat treatment:									
		Material			Scale 1 : 2		Sheet size A3		Sheet 1 / 1		
		Description Swivel Arm DTJ-04 (90° nozzle) MKII			Part number G000318				Rev. -		

This document contains CONFIDENTIAL proprietary information which shall NOT be used, reproduced, or disclosed without prior written approval of Dietronic s.r.l. Notice ISO 16016.